



BOLTON COVE

HOME & LAKE INFO

1. Directions.

Use the GOOGLE MAPS app only and type in "12 Cricket Lane, Equality, AL 36026." This will take you directly to our entrance.

2. Questions & Maintenance.

If you have any questions or need to report any maintenance, please message us immediately through your vacation rental app.

3. Initial Items Provided.

We provide some items to help you get your vacation started. The beds have clean sheets, and the bathrooms have clean towels (sometimes located in the bathroom cabinets), along with toilet paper, soap, and shampoo. Additionally, the kitchen has plates, silverware, cups, glasses, pots, pans, K-cup coffee maker with coffee, sweetener, and creamer. There is also a laundry room with a double washer and dryer.

As different guests use different amounts of supplies, we also recommend bringing your own as well.

4. No Smoking & No Pets.

We love pets, however for the enjoyment of all guests, neither pets nor smoking are allowed inside any of the homes, pool house, common areas or on our rental boat.

5. Operating the Keypad Doors:

ENTERING FRONT DOOR: On the outside, enter the code, then turn the deadbolt to the right.

LOCKING FRONT DOOR: From the inside, turn both deadbolts to the right. From the outside, enter the code and then turn the deadbolt to the left. Note that the keypad access will not work when the top deadbolt is engaged from the inside, and this door does not lock automatically when closed.

ENTERING SIDE DOOR: On the outside, enter the code, then push down on the handle to open it.

LOCKING SIDE DOOR: On the inside, turn the deadbolt to the left. Note that the keypad access will not work when the deadbolt is engaged from the inside.

6. Air Conditioning & Heat – Keep Outside Doors Closed.

Please be sure to keep all outside doors closed for the air conditioning or heat to function properly. Also, turning the air conditioning down to an extremely low temperature will freeze up the unit(s).

7. Fireplaces.

Each home has a gas fireplace in the upstairs living room and an electric fireplace in the master bedroom. Both fireplaces operate on a 2-hour timer. For everyone's safety, do not leave fireplaces on when no one is in the room and always supervise children when the fireplaces are on.

8. Internet & Televisions – Assistance.

For internet issues:

TO RESET: Unplug the power cord from the back of the upright wireless router, wait 30 seconds, and then plug it back in. The router will now take a few minutes to reset. Afterwards, log on to the wi-fi with the information provided in the welcome email.

IF NO POWER: Please make sure the equipment is plugged in the wall and that BOTH the outlet with the equipment AND the outlets to the left and right of the equipment outlet have not been tripped. To double check these, carefully make sure that any buttons in the middle of the outlets are pressed in. This will give power to the equipment again.

For television issues: First, make sure that the television and cable box have power. If you are unsure of which remote or button to use, turn the television and cable box on directly with the power buttons located on them. If both have power, and you still have no picture, check the Source or Input selection on the television. Cycle through the various Source or Input selections until you see a picture. Alternatively, if you are receiving an error message on the television, unplug the cable box to reset it. wait 30 seconds. then plug it back in.

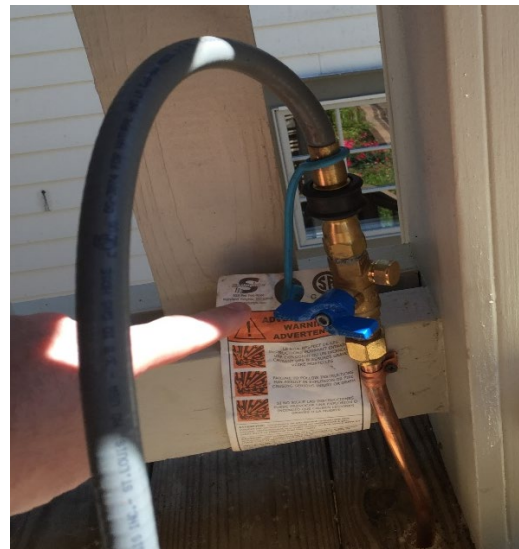
9. Gas Grill & Kitchen Cooktop.

The gas grill on the upper lakeside deck, as well as the cooktop in the kitchen, are both connected to our central propane system, so there are no tanks to change out.

TO LIGHT THE GRILL: 1. Turn the blue gas valve (located beside the grill) parallel with the gas line to open the gas flow, and 2. Turn the burner valves on the grill to light/ start. If the grill does not have an automatic starter button, you can use a long lighter to light the grill when gas is flowing.



Blue valve open; gas is flowing.



Blue valve closed; no gas flowing.

TO LIGHT THE KITCHEN COOKTOP: Turn the dial to the light position and the cooktop will automatically light. This is independent from the outside grill, so there is no need to open the gas valve outside first to use the kitchen cooktop.

WHEN DONE COOKING, turn the grill dials to off, close the gas line by the grill, and turn off the cooktop burners.

10. Kitchen Sink – No Grease.

We have a reminder sign in the kitchen, but please do not pour any grease down the kitchen sink. Doing so will back up our pump.

11. Toilets – Toilet Paper & Waste Only.

As we use a pump system, please do not flush anything but toilet paper and waste down the toilets. Flushing other items, such as feminine products, will also back up our pump.

12. Pool & Pool House.

The pool house has a sitting area, a small refrigerator, and men's and ladies' restrooms. Please also note that the pool is fairly shallow and so there is NO DIVING and NO GLASS of any kind is permitted inside the fenced pool area. Also there are NO LIFEGUARDS, so always supervise any children.

13. Kayaks.

The kayaks on the beach are for all guests to share. When you are done enjoying them, please PULL THEM ALL THE WAY BACK UP ON THE BEACH, completely out of the water, as they can float off or become damaged if left in the lake. Adult life vests are located in the pool house, and to ensure a proper fit for children, please bring your own for them. Again, always supervise any children as there are NO LIFEGUARDS.

14. Outside Lights & Common Area Cameras.

For additional safety, we have bright LED exterior lights on the entrance, houses, and walkway by the water. Also we have outside cameras on the common areas of the property such as the driveways, pool, beach and cove. Please do not adjust or unplug them.

15. Rental Boat – Location & Life Vests.

If you have previously chosen to rent the optional pontoon boat, it will be docked at our pier. Although a marina checks and stores the boat, you are also responsible for being sure that all safety equipment is on board and functioning properly before leaving our pier. The marine police on the lake will give tickets for violations including drinking while driving, not having at least a life jacket for every person, or children not wearing life jackets. We provide enough standard adult Type-II adjust life vests for the occupancy of the boat. HOWEVER, to ensure an accurate fit, guests must bring life vests for any children.

16. Supplies, Groceries & Restaurants.

For groceries and other lake supplies, go to Highway 280, and then turn left for Walmart and Home Depot or turn right for Winn-Dixie or several restaurants and fast-food ones.

Great local places on the lake to eat are SpringHouse restaurant (256-215-7080), Catherine's Market (256-215-7070), Kowaliga restaurant (256-215-7035), The Landing (205-410-6091), and Chuck's Marina (256-825-6871). All of these places are about 10-15 minutes away by boat, except for Chuck's, which is about 30-45 minutes away.

SpringHouse and Catherine's are located beside each other, and they normally run a shuttle service from the water (256-496-3677). SpringHouse is a nice, upscale lake restaurant, and Catherine's is a great local market which also serves food. The Landing is casual, outdoor eating plus it has a great swim area for the kids. Chuck's Marina, which is further away from us, has wonderful pizza.

Smith's Marina (256-444-8793), located directly across the big water from us, is the closest place for boat gasoline. It also has some great soft-serve ice cream.

By land, to cut through to Catherine's, SpringHouse, and Kowaliga, take a right onto 259 from County Road 20 like you are going to Alexander City. Go 2.7 miles and turn right just past Mt. Sinai Baptist Church – the road is not marked "Newman" but turn right here. Next look for Paul Austin Road on the right, and turn right, then go to the next stop sign, turn right onto Elkahatchee Road, then go to the next stop sign and turn right onto Highway 63 leading first to Springhouse and Catherine's Market on your right turn later to Kowaliga marina and restaurant on the right once you cross the bridge.

If you are near downtown Alexander City, Sho-Nuff Barbeque (256-234-7675) is the best kept secret. They are located at 651 Alex City Shopping Center Drive, Alexander City, AL 35010.

17. Sites to See.

Russell Lands Crossroads & Hiking Trails: (256) 329-0835

Walking & running trails, fun local events plus horse stables (256) 794-1333. Catherine's Market & SpringHouse are also located here.

Chimney Rock:

A famous landmark of Lake Martin where kids, and sometimes adults, bravely jump off the rocks.

Goat Island:

See live goats that live on the island! This is located on the way to Chimney Rock, close to the dam.

Alabama Safari Park: (334) 288-2105

Drive through zoo in Montgomery where you can feed and pet the animals.

Robert Trent Jones Golf Trail: (334) 285-1114 & Stillwaters Golf: (256) 825-1353

Great public courses.

Wind Creek State Park: (256) 329-0845

Hiking, mini-golf, and a fun zipline course.

Wellbourn Musclicar Museum: (256) 329-8474

A great collection of American classic cars.

Horseshoe Bend National Military Park: (256) 234-7111

Explore some history at the site of the last battle of the Creek War.

Wind Creek Casino (Wetumpka): (866) 946-3360

Go try your luck with the electronic one-armed bandit machines here.

18. Hospital.

Always call 911 for an emergency. Additionally, The Russell Hospital is located at 3316 US 280, Alexander City, AL 35010. Their telephone number is (256) 329-7100.

19. THANK YOU!!!

We are a small, family business and want you to have a 5-star stay with us. We sincerely appreciate you choosing to stay with us, and we hope you have a WONERFUL time.