



# WELCOME TO BOLTON COVE

## DIRECTIONS & GENERAL INFO

### 1. Directions.

**GPS:** We recommend using the **Google Maps** app and type in "12 Cricket Lane, Equality, AL 36026." This will take you to our entrance.

Alternatively, another address that is near the property that some other GPS units can find is "123 Bywater Road, Equality, AL 36026." HOWEVER if using these directions, when you get on County Road 20, be sure to turn right onto the SECOND Bywater Road, and the Bolton Cove entrance will be on the left.

From Birmingham: Take 280 East to Alexander City. Pass Walmart on your left then turn right on Highway 22 (ABC Store on your right, Walgreens across the street on the right). Go about 2 miles and turn left on Highway 259. Go a little less than 8 miles, then turn left on County Road 20. Go a little over 3 miles and turn right on the SECOND Bywater Road (there will be a sign for Bolton Cove). Take an immediate left into the Bolton Cove complex and bear left. Numbers are on the houses.

From Montgomery: Take Highway 9 to Equality. Turn right at the fork onto Highway 259. Drive until you see to County Road 20, then turn right onto County Road 20. Go to SECOND Bywater Road. Turn right. Look for Bolton Cove's entrance on the left. Numbers are on the houses.

### 2. Initial Items Provided.

We provide some supplies to help get your vacation started! The beds have clean sheets, and the bathrooms have clean towels along with toilet paper, soap, and shampoo/ conditioner. Additionally, the kitchen has paper towels, pots, pans, glasses, plates, silverware, K-cup coffee maker with coffee, sweetener, and creamer. There is also a laundry room with a washer and dryer.

As different guests use different amounts of supplies, we also recommend bringing you own items as well.

### 3. No Smoking & No Pets.

For the enjoyment of all guests, and per the Rental Agreement, smoking and pets are not allowed inside any of the homes, in common areas such as inside the pool house, arounds the pool area, on the beach, or on the boat.

### 4. Pool & Pool House.

There is a pool house for just taking a break from the sun as well as men's and ladies' restrooms for changing clothes. Please also note that the pool is fairly shallow throughout and so there is NO DIVING. Also no glass of any kind is permitted inside the fenced pool area. Please note that there are NO LIFEGUARDS, so supervise any children.

### 5. Kayaks.

The kayaks on the beach are free to use for all guests. Please return them to the same area by the sign on the beach with the storage lids closed and take your personal belongings. Adult life vests are located in the pool house, and to ensure a proper fit for children, please bring your own. Again, supervise any children as there are NO LIFEGUARDS.

## 6. Optional Rental Boat.

If you have previously chosen to rent the optional pontoon boat, it will be docked at the Bolton Cove pier. Although a marina checks and stores the boat, you are responsible for being sure that all safety equipment is on board and functioning properly before leaving the pier. The marine police on the lake will give tickets for violations including drinking while driving, not having a life jacket for every person, or children not wearing life jackets. We provide enough standard adult Type-II adjust life vests for the occupancy of the boat. HOWEVER, to ensure an accurate fit, guests must bring life vests for any children. Also remember to FILL THE GAS BACK UP at the end of your rental from a neighboring marina.

## 7. Gas Grill & Kitchen Cooktop.

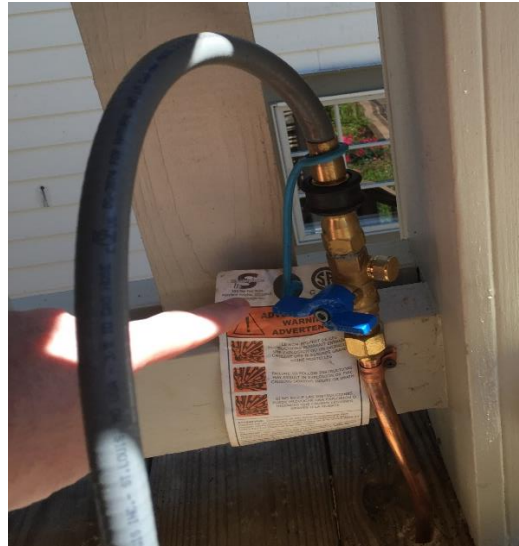
The gas grill on the upper lake side deck, as well as the cooktop in the kitchen, are both connected to our central propane system, so conveniently there are no tanks for you to change out.

TO LIGHT THE GRILL: 1. Turn the blue gas valve (located beside the grill) parallel with the gas line to open the gas flow, and 2. Turn the burner valves on the grill to light/ start. If the grill does not automatically light after doing this, please use a long lighter to ignite the burners inside the grill while the gas line is open.

If the grill does not immediately light after a couple of attempts, turn off the gas line, wait 2 minutes, and then start from step 1 above. Be sure to turn grill off and close gas line when done cooking.



*Blue valve open; gas is flowing.*



*Blue valve closed; no gas flowing.*

TO LIGHT THE KITCHEN COOKTOP: Turn the dial to the light position and the cooktop will automatically light. This is independent from the outside grill, so there no need to open the gas valve outside first to use the kitchen cooktop.

When finished, PLEASE be sure to turn off gas when not in use on both the grill and cooktop and close the gas line on the grill.

### **8. Locking the Doors.**

PLEASE make sure all doors are locked before you leave. The bottom keypad door locks automatically when closed.

TO LOCK THE GLASS LAKE SIDE DOORS: When inside, 1. Shut left-hand door first then pull UP on the handle to lock the upper and lower latches in place, 2. Now shut the right-hand door then pull the handle UP also, and 3. Lock the deadbolt.

TO LOCK THE FRONT DOOR FROM THE OUTSIDE: Enter the code and turn the top knob to the left to lock the deadbolt in place.

### **9. Air Conditioning & Heat.**

Air will escape if any doors are left open. Therefore, please be sure to KEEP ALL DOORS IN THE HOME CLOSED for the air conditioning or heat to function properly. Also, turning the air conditioning down to an extremely low temperature may freeze up the unit(s), and guests will have to wait for it to unfreeze and/ or be responsible for any service calls to repair it.

### **10. Internet & Televisions.**

Each home has its own internet access. If for some reason you are not able to log on, please restart the router by doing the following: 1. Unplug the power cord from the router, 2. Wait at least 2 minutes, 3. Plug the power cord back into the router. It may take a few seconds to reconnect to the network before guests can log on again.

There are also several televisions in each home that are all connected to Charter cable TV with local channels, main channels, and kids' channels.

Operate the TV power with either the TV remote of the same brand or the Charter remote. The Charter remote will operate the receiver and change the channels. Please do not take any remotes into other rooms as they are programmed especially for that room.

#### **If a TV is not working, please check the following:**

A. Make sure the TV and the receiver both have power. You can also turn on the TV from the TV itself without using the remote.

B. Make sure you have the proper Source or Input (TV/ Video/ HDMI 1/ HDMI 2, etc.) selected on the TV input. Use the TV remote control to change this, not the Charter remote.

## **11. Supplies, Groceries & Restaurants.**

For groceries and other lake supplies, go to Highway 280, and then turn left for Walmart and Home Depot or turn right for Winn-Dixie or several restaurants including Ruby Tuesday and several fast food ones.

Great local places on the lake to eat are SpringHouse restaurant (256-215-7080), Catherine's Market (256-215-7070), Kowaliga restaurant (256-215-7035), The Landing (205-410-6091), and Chuck's Marina (256-825-6871). All of these places are about 10-15 minutes away by boat, except for Chuck's, which is about 30-45 minutes away.

SpringHouse and Catherine's are located beside each other, and they normally run a shuttle service from the water (256-496-3677). SpringHouse is a nice, upscale lake restaurant, and Catherine's is a great local market which also serves food. The Landing is casual, outdoor eating plus it has a swim area for the kids. Chuck's Marina, which is further away from us, has great pizza.

Smith's Marina (256-444-8793), located directly across the big water from us, is the closest place for boat gasoline. It also has some great soft-serve ice cream.

By land, to cut through to Catherine's, SpringHouse, and Kowaliga, take a right onto 259 from County Road 20 like you are going to Alexander City. Go 2.7 miles and turn right just past Mt. Sinai Baptist Church – the road is not marked "Newman" but turn right here. Next look for Paul Austin Road on the right, and turn right, then go to the next stop sign, turn right onto Elkahatchee Road, then go to the next stop sign and turn right onto Highway 63 leading first to Springhouse and Catherine's Market on your right turn later to Kowaliga marina and restaurant on the right once you cross the bridge.

If you are near downtown Alexander City, Sho-Nuff Barbeque (256-234-7675) is the best kept secret! They are located at 651 Alex City Shopping Center Drive, Alexander City, AL 35010.

## **12. Sites to See:**

Russell Lands Crossroads & Hiking Trails: (256) 329-0835

Walking & running trails, fun local events plus horse stables. Catherine's Market & SpringHouse are also located here.

Chimney Rock:

A famous landmark of Lake Martin where kids, and sometimes adults, bravely jump off the rocks.

Goat Island:

See live goats that live on the island! This is located on the way to Chimney Rock, close to the dam.

Wind Creek State Park: (256) 329-0845

Hiking, camping and a wonderful zipline course.

Alabama Safari Park: (334) 288-2105

Drive-through zoo in Montgomery where you can feed and pet the animals!

Robert Trent Jones Golf Trail: (334) 285-1114 & Stillwaters Golf: (256) 825-1353

Great public courses.

**13. Maintenance.**

If there are any maintenance problems, please call us immediately at (256) 392-7524 so that they can be corrected. Press 3 for existing guests on the voice prompt choices. This telephone number does not receive text messages.

**14. Hospital.**

Always call 911 for an emergency. Additionally, The Russell Hospital is located at 3316 US 280, Alexander City, AL 35010. Their telephone number is (256) 329-7100.

**15. THANK YOU!!!**

We sincerely appreciate your stay, and we hope you have a wonderful time!



**Courtland Davis**  
**Co-Owner**

**CONTACT NUMBER: (256) 392-7524**