



WELCOME TO BOLTON COVE

DIRECTIONS & GENERAL INFO

1. Directions.

GPS: We recommend that you use the Google Maps app and input "12 Cricket Lane, Equality, AL 36026."

Alternatively, another address that is near the property that some other GPS units can find is "123 Bywater Road, Equality, AL 36026." However if using these directions, when you get on County Road 20, be sure to go to the SECOND Bywater Road, turn right and Bolton Cove will be immediately on the left. Alternatively if you are using Google Maps, you can use

From Birmingham: Take 280 East to Alexander City. Pass Walmart on your left then turn right on Highway 22 (ABC Store on your right, Walgreens across the street on the right). Go about 2 miles and turn left on Highway 259. Go a little less than 8 miles, then turn left on County Road 20. Go a little over 3 miles and turn right on the SECOND Bywater Road (there will be a sign for Bolton Cove). Take an immediate left into the Bolton Cove complex and bear left. Numbers are on the houses.

From Montgomery: Take Highway 9 to Equality. Turn right at the fork onto Highway 259. Drive until you see to County Road 20, then turn right onto County Road 20. Go to SECOND Bywater Road. Turn right. Look for Bolton Cove's entrance on the left. Numbers are on the houses.

2. Initial Items Provided.

We provide enough supplies to get you started with your stay. The bedrooms and bathrooms have towels, sheets, blankets, and an initial stock of soap, toilet paper, shampoo, and conditioner. Additionally the kitchen has pots, pans, glasses, plates, silverware, K-cup coffee maker, and an initial stock of coffee, sweetener, creamer, and paper towels. There is also a laundry room with a washer and dryer.

As different guests use different amounts of supplies, we also recommend bringing your own.

3. No Smoking & No Pets.

For the enjoyment of all guests, smoking and pets are not allowed inside any of the homes, on the boat or in common areas such as inside the pool house, the pool area, or on the beach. Violating these policies will result in immediate termination of the rental with no refunds and extra cleanup charges will automatically apply.

4. Pool & Pool House.

There are men's and ladies restrooms as well as a pool house for changing clothes or just taking a break from the sun. Please note that there are no lifeguards. Please also note that the pool is fairly shallow throughout and so there is NO DIVING. No glass of any kind is permitted inside the fenced pool area.

5. Optional Rental Boat.

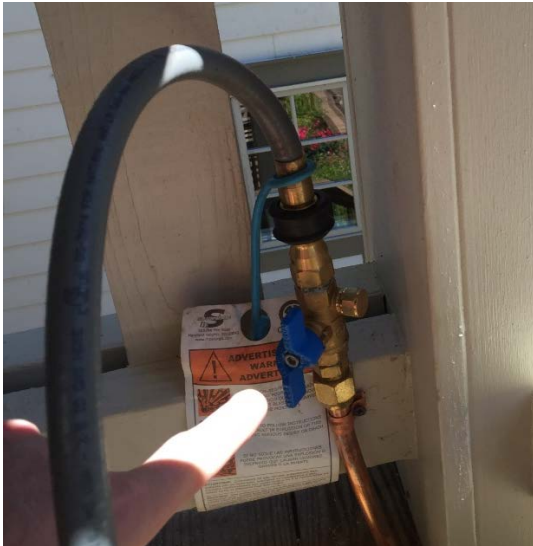
If you have previously chosen to rent the optional boat, it will be at the pier at Bolton Cove. You are responsible for being sure that all safety equipment is on board and functioning properly before taking the boat out. The marine police on the lake will give tickets for violations including drinking while driving, not having a life jacket for every person, or children not wearing life jackets. For an accurate fit, we encourage guests to bring their own life vests, especially for children. Also remember to fill the gas back up at the end of your rental with gasoline from a neighboring marina.

6. Gas Grill & Cooktop.

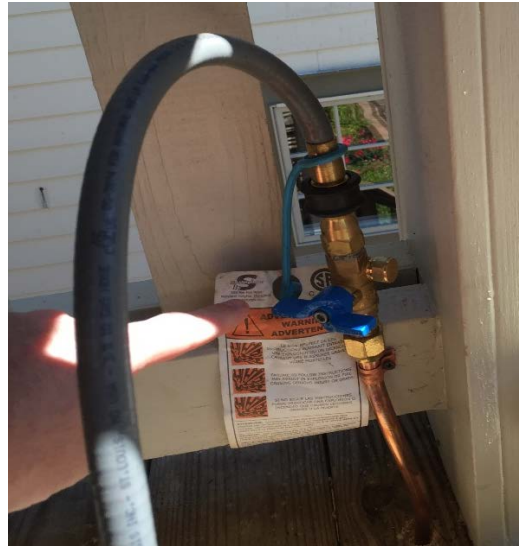
The gas grill on the main floor deck as well as the cooktop in the kitchen are both conveniently connected to our propane system, not individual propane tanks.

To light the grill: 1. Turn the blue gas valve (located beside the grill) parallel with the gas line to open the gas flow, and 2. Turn the burner valves on the grill to light/ start. If the grill does not automatically light after doing this, please use a long lighter to ignite the burners inside the grill while the gas line is open.

If the grill does not immediately light after a couple of attempts, turn off the gas line, wait 2 minutes, and then start from step 1 above. Be sure to turn grill off and close gas line when done cooking.



Blue valve open; gas is flowing.



Blue valve closed; no gas flowing.

To light the kitchen cooktop: Turn the dial to the light position and the cooktop will automatically light.

When finished, be sure to turn off gas when not in use on both the grill and cooktop, and close the gas line on the grill.

7. Locking Porch Doors.

MAKE SURE ALL DOORS ARE LOCKED BEFORE YOU LEAVE. The doors leading to the two decks are different to lock: The left hand glass door on each must be firmly latched by pulling **UP** on the handle, then you lock the right hand door using the deadbolt.

8. Air Conditioning.

The cool air will escape when doors are left open. Therefore please be sure to keep all doors in the home closed for the air conditioning to cool properly.

9. Televisions.

There are several televisions connected to satellite TV.

Operate the TV power with either the TV remote of the same brand or the Direct TV remote should also operate it. The Direct TV remote will operate the Direct TV box and change the channels. Please do not take any remotes into other rooms as they are programmed especially for that room.

If you cannot get a picture on the TV, please check the following:

1. Make sure the TV and the Direct TV box are both on:

- a. Home 9's Direct TV boxes are beside the TVs.
- b. Home 10's Direct TV boxes are beside the TVs except the master bedroom, which is on a shelf in the laundry area.
- c. Home 12 (see 2. a. below)

2. Make sure you have the proper source (TV/ Video) selected on the TV to watch satellite (as opposed to having the source selected for DVD or another input). Use the remote control for the TV to change the source, not the Direct TV remote.

- a. Home 12's boxes are all in the electronics control closet beside the living room.

Home 12: Living Room TV, Surround Sound, and DVD player Instructions:

1. Turning on TV
 - Locate large LG remote. Press green power button. Green LED light should appear at bottom right of television.
2. Turning on DirectTV Box
 - Locate white DirectTV remote. Make sure knob is slid under the "D" symbol. Press ON button. A picture should appear on screen. If you have a picture with no sound refer to step 3.
3. Turning on Surround Sound
 - Locate long DENON remote. Press ON button. Adjust volume to desirable tone. If there is no sound, walk to the closet and locate black DENON receiver box. Adjust the SOURCE SELECT knob to TV/CBL function. If still no sound press the AUTO button.
4. Operating the DVD player
 - Locate the LG Remote. Press INPUT button and select HDMI 2 function. Press power button on DVD player. Select DVD from menu.

10. Restaurants & Groceries.

For groceries, restaurants, other lake supplies, etc., go back to Hwy 280. Turn left for Walmart and Home Depot or turn right for Winn-Dixie and several restaurants including Ruby Tuesday and several fast food restaurants.

Great places on the lake to eat are Springhouse restaurant (256-215-7080), Catherine's Market (256-215-7070), Kowaliga restaurant (256-215-7035), and The Landing (205-410-6091):

Springhouse and Catherine's are located next door to each other, and they normally will run a shuttle service from the water (256-496-3677). Springhouse is a nice, upscale lake restaurant, and Catherine's is a great local market which also serves food.

By boat, Kowaliga restaurant is located about 10 minutes away and is beside Kowaliga Marina. The casual dining restaurant has its own boat dock for patrons, great views of the lake and it has a full-service bar. Children will love the idea of going to dinner by water and will like the restaurant.

By land, these three are all little over 20 miles, and will take you about 25 to 30 minutes to drive. Directions from the house to Kowaliga by car: Take a right onto 259 from County Road 20 like you are going to Alexander City. Go 2.7 miles and turn right just past Mt. Sinai Baptist Church – the road is not marked "Newman" but turn right here. Next look for Paul Austin Road on the right, and turn right, then go to the next stop sign, turn right onto Elkahatchee Road, then go to the next stop sign and turn right onto Highway 63 leading first to Springhouse and Catherine's Market on your right turn later to Kowaliga marina and restaurant on the right once you cross the bridge.

The Landing (205-410-6091) is casual dining as well and is located next to Parker Creek Marina.

If you are near downtown Alexander City, Sho-Nuff Barbeque (256-234-7675) is their best kept secret! They are located at 651 Alex City Shopping Center Drive, Alexander City, AL 35010.

11. Maintenance.

If there are any problems, please call us immediately so that they can be corrected.

12. THANK YOU!!!

We sincerely appreciate your stay, and we hope you have a wonderful time!



Courtland Davis
Co-Owner

CONTACT NUMBER: (256) 392-7524